



OYSTER 885 SERIES II

CENTREBOARD



OYSTER

O Y S T E R 8 8 5 S I I C E N T R E B O A R D

EXPERIENCE MORE

Discover a world of endless possibilities with the go anywhere Oyster 885CB featuring retractable centreboard keel.

With an impressive draft reduction from 5m/16'5" to a remarkable 2.3m/7'6", the Oyster 885CB offers you the freedom to cruise or anchor anywhere with complete confidence.

BEST OF BOTH WORLDS

The Oyster 885 Centreboard option incorporates a carbon mast and boom, as well as carbon composite standard rigging, all aimed at enhancing stability and balance, while minimizing weight for optimal sailing performance. When the centreboard is lowered, the yacht gains a firm grip on the water, resulting in exceptional windward performance. The twin rudders provide fingertip control, making the sailing experience comfortable and thrilling.

The retractable centreboard is raised and lowered at the touch of a button from the helm station. The centreboard swings up inside the ballast keel to give you maximum clearance of the seabed, while maintaining the yacht's spacious interior. The shallow-draft provides peace-of mind when navigating shallow waters and allows you to easily tuck into safe anchorages, marinas and river inlets at a moment's notice.

Below decks, there are extensive customisation options. She features six cabins, four well-appointed luxury ensuite cabins, able to accommodate 8 guests and a discreet, forward crew quarters means privacy is assured. On deck, the cockpit is perfect for alfresco dining for 12 people and the sunken foredeck chillout zone provides a magical space for movies under the stars.

FEATURES

- **Centreboard keel**
- **Reduced draft of 2.3m/7'6"**
- **Six cabins, four double ensuite**
- **Separate crew quarters and mess for four crew**
- **Standard carbon rig with Park Avenue boom**
- **Full customised hydraulic system which powers bow and stern thrusters and sail handling system**
- **Single point mainsheet with captive reel winch operated with easy joystick controls**
- **Large ergonomically designed cockpit**
- **Large hydraulic bathing platform**
- **Sunken tender well – doubles as tender storage and entertaining zone**
- **Large, glazed, power-assisted companionway door to saloon**
- **Standard Forced Air Ventilation**
- **Walk-in engine with full height access**
- **Lloyd's Register certified hull and deck**



O Y S T E R 8 8 5 S I I C E N T R E B O A R D

EXTERIOR













O Y S T E R 8 8 5 S I I C E N T R E B O A R D

OAK INTERIOR











O Y S T E R 8 8 5 S I I C E N T R E B O A R D

W A L N U T I N T E R I O R

















O Y S T E R 8 8 5 S I I C E N T R E B O A R D

**COOL VIBRANT OAK
INTERIOR**











O Y S T E R 8 8 5 S I I C E N T R E B O A R D

S P E C I F I C A T I O N



O Y S T E R 8 8 5 S I I C E N T R E B O A R D
S P E C I F I C A T I O N

Length overall including stemhead	27.08m / 88'10"
Length of hull	26.06m / 85'6"
Length of waterline	24.18m / 79'4"
Beam	6.33m / 20'9"
Draft – centreboard up	2.3m / 7'6"
Draft – centreboard down	5m / 16'5"
Displacement - standard keel	78,000kg / 171,960lbs
Typical engine	Cummins Turbo-charged QSL-330 246kW (330hp)
Tanks - fuel	3,500 litres / 770 Imp Gallons (925 US gals)
Tanks - water	2,000 litres / 440 Imp Gallons (528 US gals)
Sail area - including 105% foretriangle	391.50m ² / 4,214ft ²
Air draft approx, excluding antennae	37.60m / 123'3"



O Y S T E R 8 8 5 S I I C E N T R E B O A R D

PLANS



**OYSTER 885 SERIES II CENTREBOARD
DECK SALOON SAIL PLAN**



OYSTER 885 SERIES II CENTREBOARD
CENTREBOARD UP



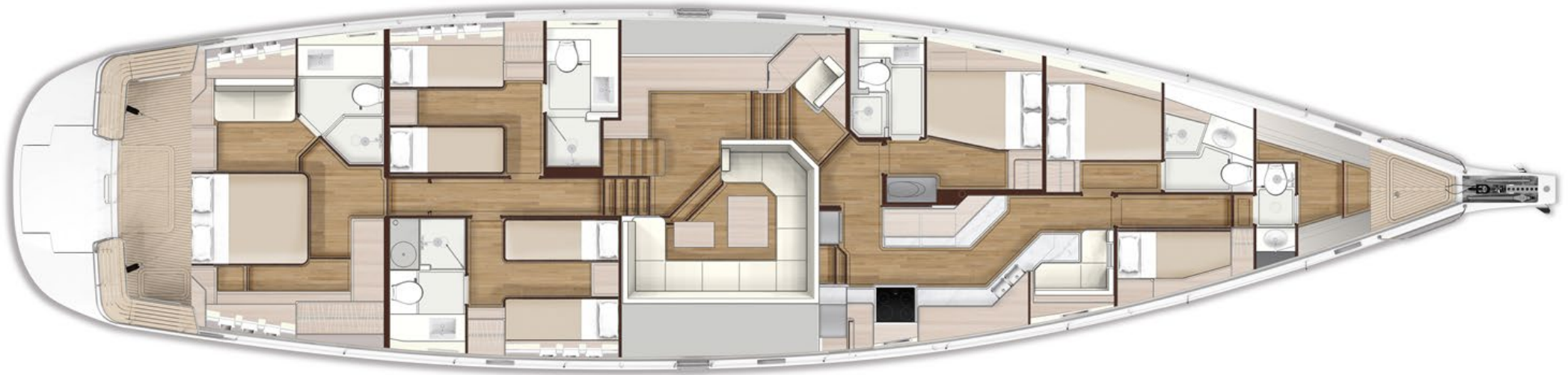
OYSTER 885 SERIES II CENTREBOARD
CENTREBOARD DOWN



OYSTER 885 SERIES II CENTREBOARD
STANDARD DECK PLAN



**OYSTER 885 SERIES II CENTREBOARD
STANDARD LAYOUT**



OYSTER 885 SERIES II CENTREBOARD
ALTERNATIVE LOWER SALOON LAYOUT



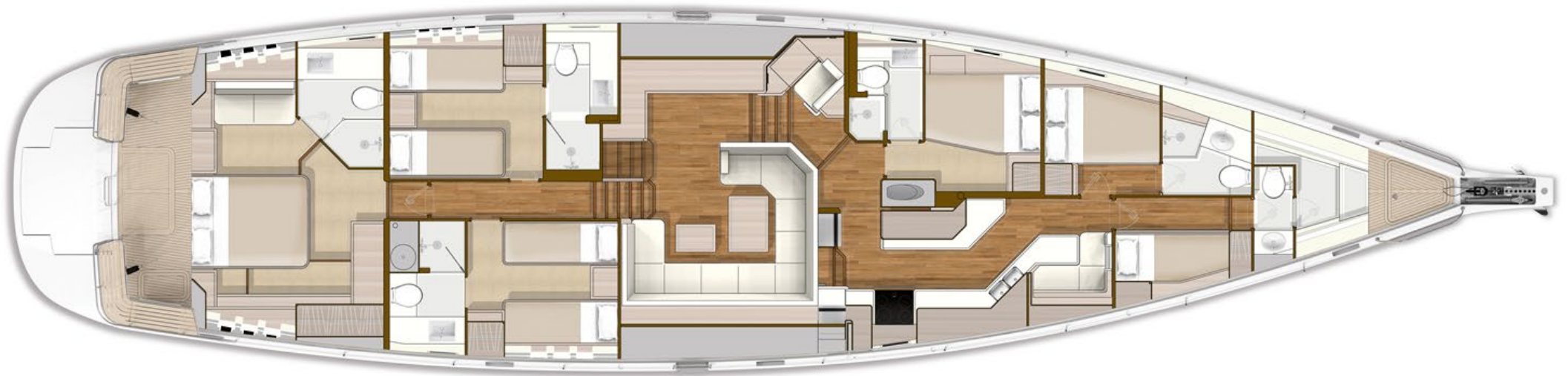
OYSTER 885 SERIES II CENTREBOARD
STANDARD PROFILE & DECK PLAN



**OYSTER 885 SERIES II CENTREBOARD
RAISED SALOON DECK PLAN**



OYSTER 885 SERIES II CENTREBOARD
RAISED SALOON LAYOUT



OYSTER 885 SERIES II CENTREBOARD
RAISED SALOON PROFILE & DECK PLAN



OYSTER YACHTS. THE WORLD IS YOURS.

For more information call: +44 (0) 1473 851 436 or email sales@oysteryachts.com



